

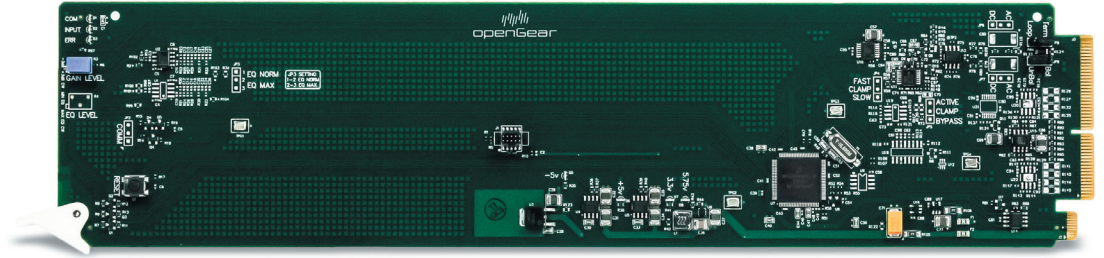
### FEATURES

- ▷ Multi-mode input provides differential or single-ended input and hi-Z looping or card-terminated operation
- ▷ Remote control monitoring via DashBoard™ software

### APPLICATIONS

- ▷ Bi/Tri-Level Sync Distribution
- ▷ LTC Timecode Distribution
- ▷ Fly Packs
- ▷ House of Worship
- ▷ Mobile Trucks

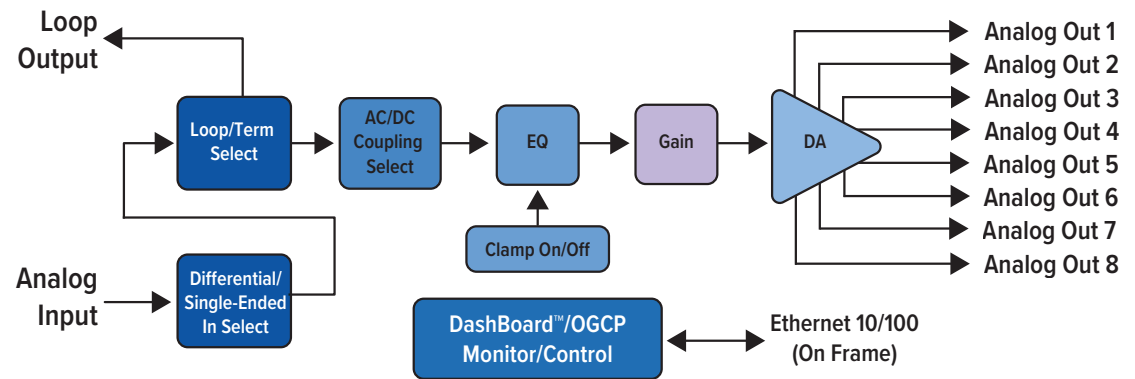
Provides 1 x 8 distribution with one analog input and eight 75Ω analog outputs.



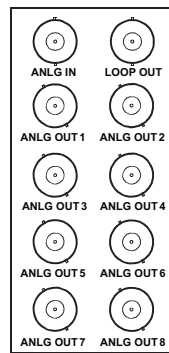
The OG-5310-ADA Analog Video Distribution Amplifier provides 1 x 8 distribution with one analog input and eight 75Ω analog outputs. Card jumpers allow setting the input as differential (floating ground) or

single ended, and Hi-Z looping input or on-card 75Ω terminated. A trim control located on the front of the card allows gain control. The card can be accessed using DashBoard™ remote control for status monitoring.

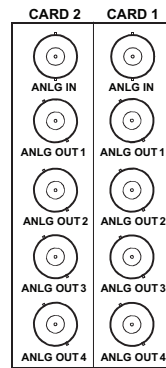
### BLOCK DIAGRAM



### REAR MODULE MODELS

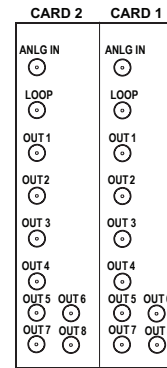


R2-5310-A



R2-5310-B

Note: R2-5310-B allows only typical single-ended input operation (shield conductor of input BNC tied to GND). Also, this rear module can only be used when input termination (non-looping) is selected using the card jumper.



R2-5310-C  
R2-5310-D

Note: R2-5310-C & R2-5310-D allows only typical single ended input operation (shield conductor of input BNC tied to GND).

### ORDERING INFORMATION

PART #	CARD OPTIONS
OG-5310-ADA	1 x 8 Analog Video Distribution Amplifier
R2-5310-A	20-Slot Frame Rear I/O Module (Standard Width) (1) Analog Video Input BNC, (8) Analog DA Output BNCs, (1) Input Loop Output BNC
R2-5310-B	20-Slot Frame Rear I/O Module (Split; supports 2 cards) (1) Analog Video Input BNC, (4) Analog DA Output BNCs (connections are per card)
R2-5310-C	20-Slot Frame Rear I/O Module (Split; supports 2 cards) (1) Analog Video Input, (8) Analog DA Outputs, (1) Input Loop Output (connections are per card; all connectors are DIN 1.0/2.3)
R2-5310-D	20-Slot Frame Rear I/O Module (Split; supports 2 cards) (1) Analog Video Input, (8) Analog DA Outputs, (1) Input Loop Output (connections are per card; all connectors are HD-BNC)

### TECHNICAL SPECIFICATIONS

#### Electrical

Power	2 Watts
-------	---------

#### Analog Video Input

Number of Inputs	1
Impedance	User selectable as hi-Z looping or card terminated 75Ω
Level	Vp-p, nominal
Return Loss	46 dB @ 3.58 MHz
Input Modes	User selectable as differential/single-ended

#### Analog Video Output

Number of DA outputs	Up to (8) Impedance: 75Ω
Level	1 Vp-p, nominal Looping Output: (1)

#### Performance

Frequency Response	>0.05 dB @ 3.58 MHz Differential
Gain	>0.15% @ 3.58 MHz Differential Phase: >0.15° @ 3.58 MHz
S/N	>60 dB; 5 MHz BW