

FEATURES

- ▷ Portable, Rack mount and openGear versions
- ▷ Rack Mountable
- ▷ Ideal for interface to Fiber Transport
- ▷ Auto Null
- ▷ Supplies party-line power up to 6 Belt Packs
- ▷ RTS and ClearCom compatible
- ▷ Ideal for Belt Pack Fiber extension or matrix

Intercom units provide an interface between two channels of 2-wire party-line intercom audio and two channels of 4-Wire analog line-level signals

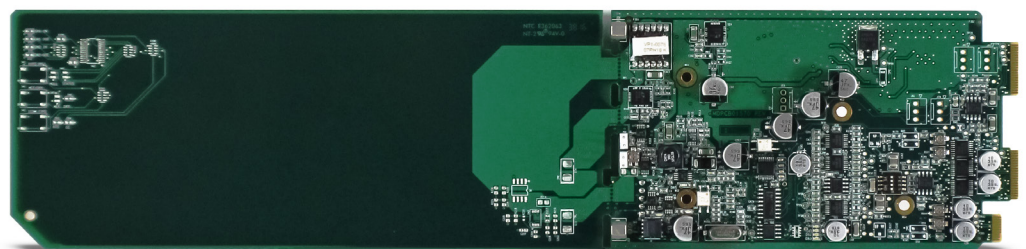


The COMMS 300 Series, Intercom units provide a means to interface between two channels of 2-wire party-line intercom audio and two channels of 4-Wire analog line-level signals. The unit is capable of performing auto nulling for each channel with the push of a button. In addition, each of the 4-Wire input and output channel levels are monitored and displayed on easy to understand front panel VU meters. With the flip of a switch the unit can be a +28VDC party-line voltage power source while providing the 200 ohm intercom audio termination on both channels. If so desired, the party-line source and termination can be removed by just flipping the switch back. The unit can also be configured to work with either RTS party-line or ClearCom party-line equip-

ment with the flip of a front panel control switch. This switch adjusts the output gain between the party line circuitry and the 4 Wire line level circuitry depending on which type of units one is interfacing with.

Auto nulling is done to achieve maximum return loss between the 4 Wire input and the 4 Wire output channels.

The OG-Comms is fully openGear compatible, an industry standard card frame, fully SNMP controllable and monitorable through DashBoard industry standard software. The openGear frame also offers redundant power supplies. By adding a MultiDyne OG-3600 Audio fiber transport, a party-line can be extended over fiber.



ORDERING INFORMATION

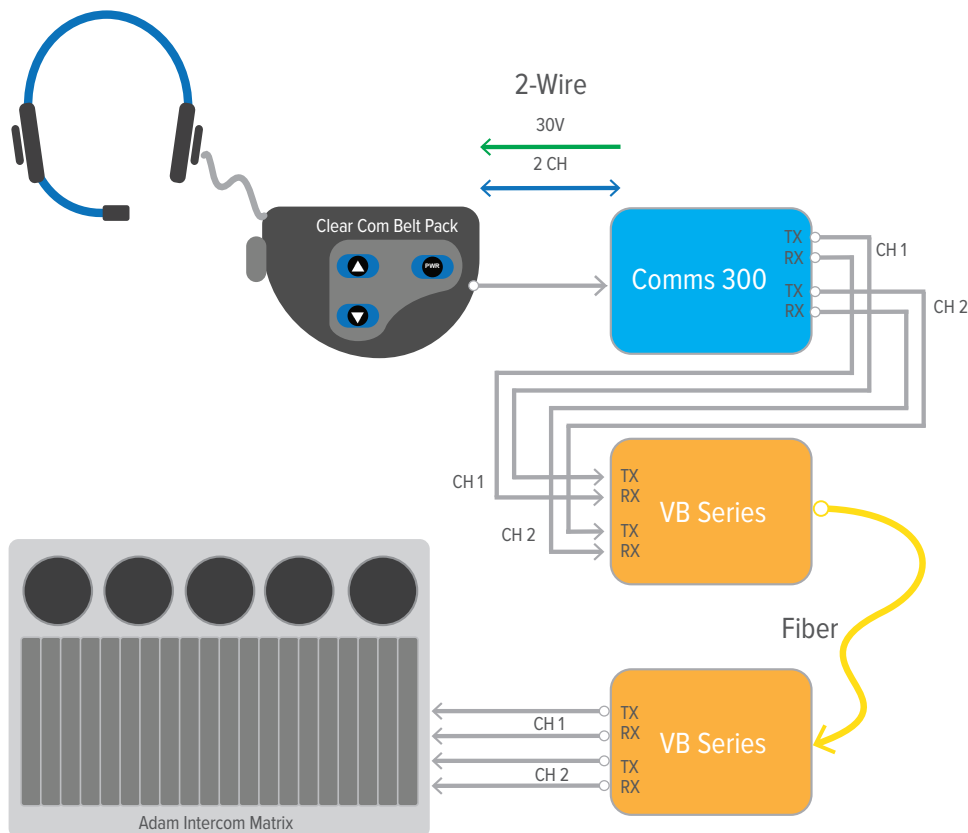
COMMS-300	2 Ch Partyline to analog line level (4 wire) audio interface; For portable/throw down applications
COMMS-300-RM	2 Ch Partyline to analog line level (4 wire) audio interface; For 1 RU rack mounting only
COMMS-350	2 Ch Partyline to analog line level (4 wire) audio interface; For LightBox, LightCube & HalfCube systems only
BD-350	2 Ch Partyline to analog line level (4 wire) audio interface; For BullDog systems only
OG-COMMS	2 Ch Partyline to analog line level (4 wire) audio interface; Card for the openGear OG3-FR-x frame

1-877-685-8439
1-516-671-7278
sales@multidyne.com



10 Newton Place,
Hauppauge, NY 11788

APPLICATION



SPECIFICATIONS

General Audio:
Frequency Response: ± 2.5 dB, 100 Hz to 8 kHz
Distortion (THD+N): <TDB%, measured at 1 kHz, 4-wire input to 2-wire interface
Signal-to-Noise Ratio: >TBD dB, measured at 1 kHz, 4-wire input to 2-wire interface
2-Wire Party-Line Intercom Interface:
Type: 2-channel party-line, unbalanced (pin 1 common; pin 2 DC with channel 1 audio; pin 3 channel 2 audio)
Compatibility: single- and dual-channel intercom systems such as from RTS® and Clear-Com®
Impedance—Normal: >20 k ohms
Impedance—2-Wire (PL) Power Source Mode: 200 ohms
Nominal Level: -10 dBu RTS, -14dbu Clear Com
"Mic Kill" Signal: 24 kHz, $\pm 1\%$
2-Wire Power Source: 28 Vdc nominal, 750 mA maximum

Hybrids: 2
Topology: 3-section analog circuitry compensates for resistive, inductive, and capacitive 2-wire party-line loads
Nulling Method: automatic upon user initiation, processor implements digital control of analog circuitry; settings stored in non-volatile memory
Nulling Line Impedance Range: 120 to 350 ohms
Nulling Cable Length Range: 0 to 3200 feet
Trans-Hybrid Loss: >35 dB, typical at 1000 Hz
4-Wire Inputs: 2
Type: capacitor-coupled
Impedance: 20 k ohms
Nominal Level: +4 dBu
Maximum Level: +22 dBu
4-Wire Outputs: 2
Type: capacitor-coupled
Impedance: <50 ohms nominal
Nominal Level: +4 dBu
Maximum Level: +20 dBu into 2 k ohms
Power requirements
Connector Type: Coaxial, negative sleeve, Switchcraft 712 compatible
Power: 9 to 24VDC, < 25W depending of number of beltpacks connected

1-877-685-8439
1-516-671-7278
sales@multidyne.com

