

**FEATURES**

- ▷ Rugged Portable Design
- ▷ Rack Mountable
- ▷ Ideal for interface to Fiber Transpot
- ▷ Auto Null
- ▷ Supplies party-line power up to 6 Belt Packs
- ▷ RTS and ClearCom compatible
- ▷ Ideal for Belt Pack Fiber extension or matrix
- ▷ Portable, Rack mount and openGear versions

Intercom units provides an interface between two channels of 2-wire party-line intercom audio and two channels of 4-Wire analog line-level signals



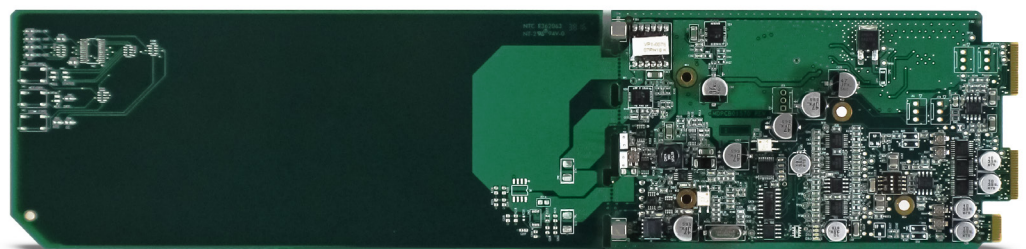
The COMMS 300 and the openGear version, Intercom units provides a means to interface between two channels of 2-wire party-line intercom audio and two channels of 4-Wire analog line-level signals. The unit is capable of performing auto nulling for each channel with the push of a button. In addition, each of the 4-Wire input and output channel levels are monitored and displayed on easy to understand front panel VU meters. With the flip of a switch the unit can be a +28VDC party-line voltage power source while providing the 200 ohm intercom audio termination on both channels. If so desired, the party-line source and termination can be removed by just flipping the switch back. The unit can also be configured to work with either RTS party-line or Clear Com party-line equipment with the flip of a front panel control switch. This switch adjusts the output gain between the party line circuitry and the 4 Wire

line level circuitry depending on which type of units one is interfacing with.

Auto nulling is done to achieve maximum return loss between the 4 Wire input and the 4 Wire output channels.

The Intercom unit contains four 5-segment LED VU meters on the front panel. The first set displays the 4 Wire input levels for Channel 1 as well as the 4 Wire output levels for Channel 1. The second set of VU meters display the input and output levels associated with Channel 2.

The OG-Comms is fully openGear compatible, an industry standard card frame, fully SNMP controllable and monitorable through DashBoard insutry standard software. The openGear frame also offers redundant power supplies. By adding the MultiDyne OG-Comms Audio fiber trasport card, a partiline can be extended over fiber.



**ORDERING INFORMATION**

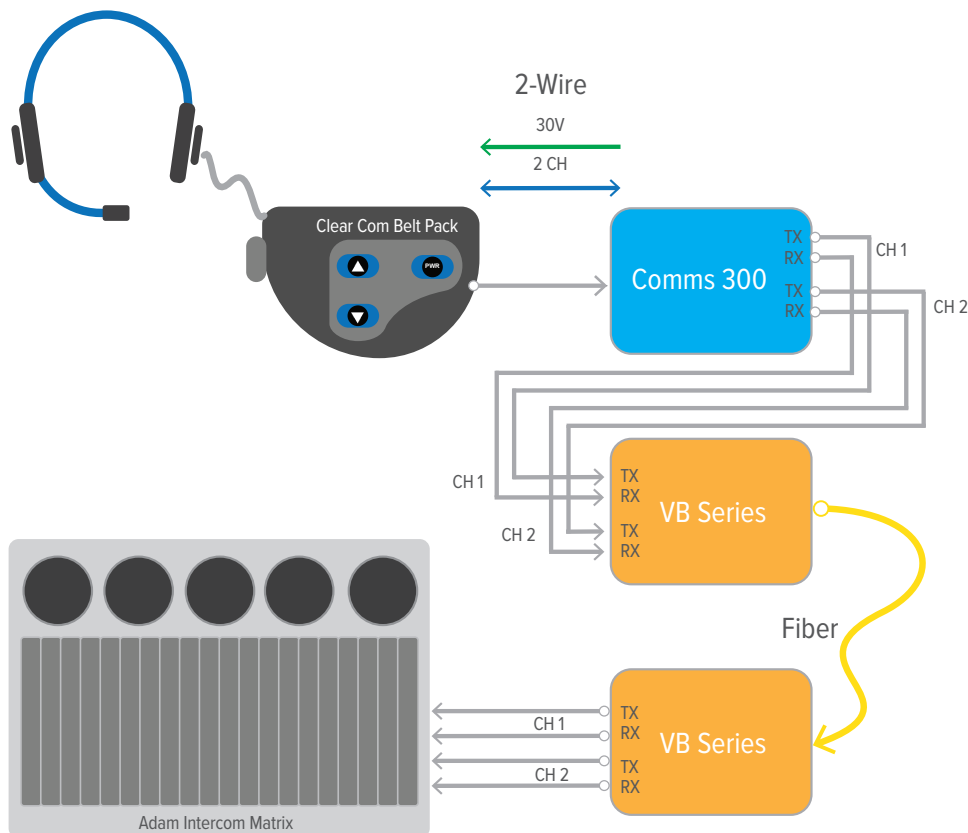
COMMS-300	2 Ch Partyline to analog line level (4 wire) audio interface; For portable/throw down applications
COMMS-300-RM	2 Ch Partyline to analog line level (4 wire) audio interface; For 1 RU rack mounting only
COMMS-350	2 Ch Partyline to analog line level (4 wire) audio interface; For LightBox, LightCube & HalfCube systems only
BD-350	2 Ch Partyline to analog line level (4 wire) audio interface; For BullDog systems only
OG-COMMS	2 Ch Partyline to analog line level (4 wire) audio interface; Card for the openGear OG3-FR-x frame

1-877-685-8439  
1-516-671-7278  
sales@multidyne.com



10 Newton Place,  
Hauppauge, NY 11788

**APPLICATION**



**SPECIFICATIONS**

<b>General Audio:</b>
Frequency Response: $\pm 2.5$ dB, 100 Hz to 8 kHz
Distortion (THD+N): <TDB%, measured at 1 kHz, 4-wire input to 2-wire interface
Signal-to-Noise Ratio: >TBD dB, measured at 1 kHz, 4-wire input to 2-wire interface
<b>2-Wire Party-Line Intercom Interface:</b>
Type: 2-channel party-line, unbalanced (pin 1 common; pin 2 DC with channel 1 audio; pin 3 channel 2 audio)
Compatibility: single- and dual-channel intercom systems such as from RTS® and Clear-Com®
Impedance—Normal: >20 k ohms
Impedance—2-Wire (PL) Power Source Mode: 200 ohms
Nominal Level: -10 dBu RTS, -14dbu Clear Com
"Mic Kill" Signal: 24 kHz, $\pm 1\%$
2-Wire Power Source: 28 Vdc nominal, 750 mA maximum

<b>Hybrids: 2</b>
Topology: 3-section analog circuitry compensates for resistive, inductive, and capacitive 2-wire party-line loads
Nulling Method: automatic upon user initiation, processor implements digital control of analog circuitry; settings stored in non-volatile memory
Nulling Line Impedance Range: 120 to 350 ohms
Nulling Cable Length Range: 0 to 3200 feet
Trans-Hybrid Loss: >35 dB, typical at 1000 Hz
<b>4-Wire Inputs: 2</b>
Type: capacitor-coupled
<b>Impedance: 20 k ohms</b>
Nominal Level: +4 dBu
Maximum Level: +22 dBu
<b>4-Wire Outputs: 2</b>
Type: capacitor-coupled
Impedance: <50 ohms nominal
Nominal Level: +4 dBu
Maximum Level: +20 dBu into 2 k ohms
<b>Power requirements</b>
Connector Type: Coaxial, negative sleeve, Switchcraft 712 compatible
Power: 9 to 24VDC, < 25W depending of number of beltpacks connected

1-877-685-8439  
1-516-671-7278  
sales@multidyne.com

